



From concept to compliance,
details matter.

From manufacturing and engineering to architecture and high tech, CorelDRAW® Technical Suite 2021 is the ultimate hub for designing detailed technical illustrations, documentation, marketing, and more, with total control and incredible efficiency.

2021 Product

Seriously precise.
Incredibly precise.

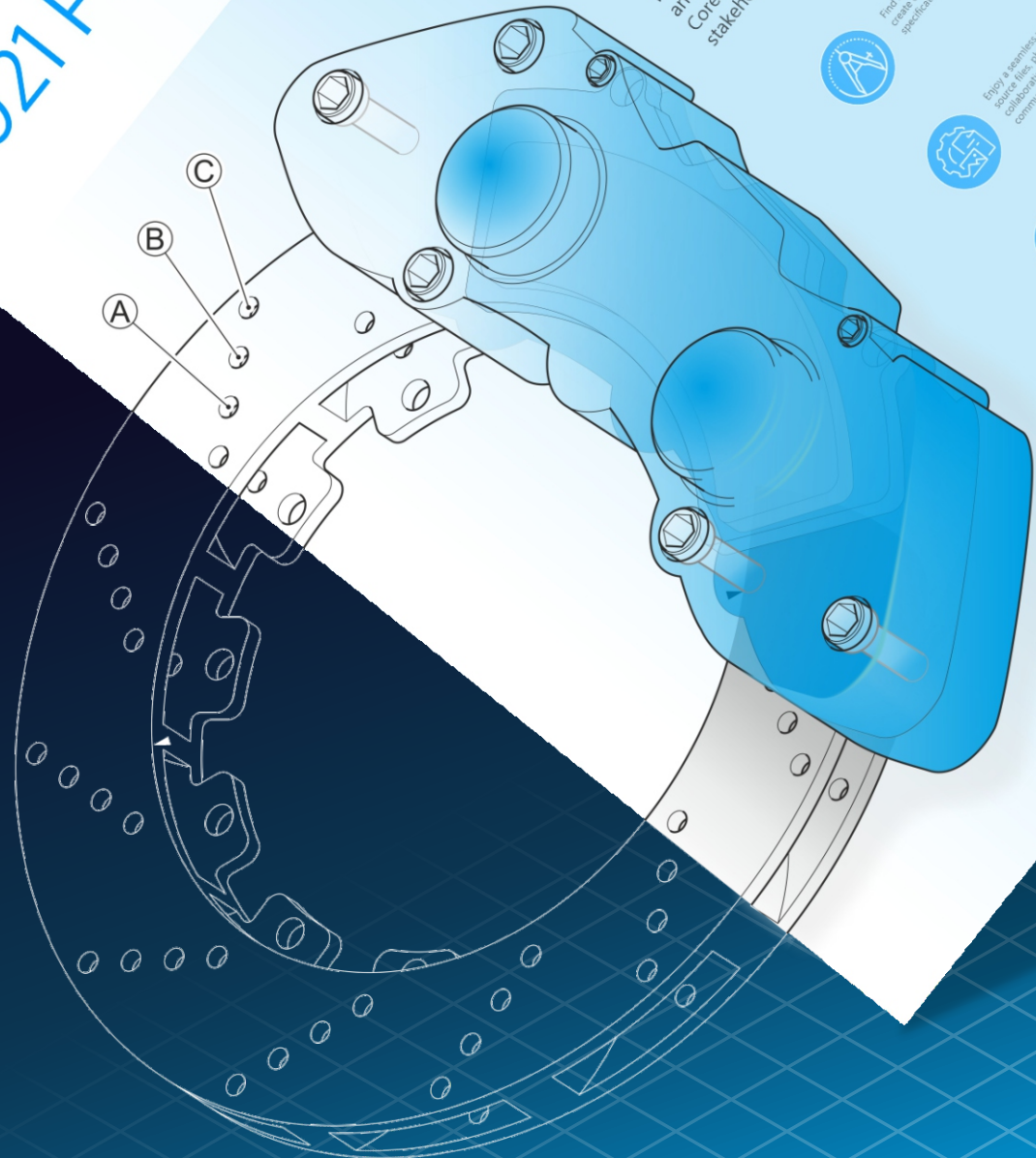
Create everything from precise technical illustrations with Corel DESIGNER to compelling marketing materials with CorelDRAW. Edit photos for documentation with Corel PHOTO-PAINT and add screenshots with CAPTURE. When you're ready to share files for collaborative review and approval, use web-based CorelDRAW.app to streamline the stakeholder feedback process.



Find a range of precise illustration and design tools to create detailed technical documentation with exact specifications.



Enjoy a seamless workflow from source files, photo documentation, collaborating on and communications.



Why choose CorelDRAW Technical Suite 2021?

Precise

Find a range of precise illustration and design tools to create detailed technical documentation with exact specifications.

Productive

Enjoy a seamless workflow from opening 2D and 3D source files, photos, documents and data, to producing, reviewing, and publishing technical communications.

Comprehensive

Count on this complete suite of professional design applications for authoring technical documentation, reviewing, and publishing detailed illustrations with ease.

Collaborative

Connect with cross-functional teams and clients using popular authoring systems integration—from project creation and authoring to collaborative review and output.

What are the key features and benefits?

Complete suite for visual technical communication

Create everything from precise technical illustrations with Corel DESIGNER™ to stand-out marketing collateral with CorelDRAW®. Edit photos for documentation with Corel PHOTO-PAINT™ and add screenshots with CAPTURE™. When you're ready to share files for collaborative review and approval, use CorelDRAW.app™ for web or iPad to streamline the stakeholder feedback process.

Graphically rich technical design tools

Access dedicated illustration and design tools that ensure accuracy for isometric drawing, detailed callouts, advanced dimensioning, and so much more. Find features and functionality that enable technical illustrators, writers and graphics users to produce just about anything—from detailed schematics and floor plans to complex maintenance manuals and spare parts pages.

Repurpose key assets

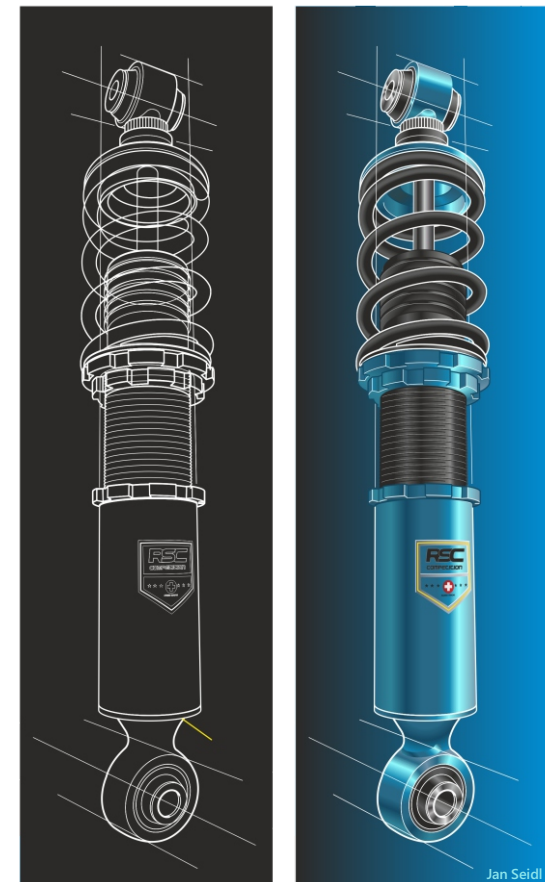
Repurpose 3D designs with the integrated XVL Studio Corel Edition, and the optional XVL Studio 3D CAD Corel Edition add-on for advanced 3D CAD assembly formats. Insert 3D models, data tables, and .DES or .CDR illustrations as linked or embedded objects into Corel DESIGNER for instant access, sharing and reference.

Unmatched file format compatibility

Technical graphics professionals can access critical data from various sources and deliver technical files in a readable format with support for widely used file formats, including CGM, WebCGM, 3D PDF, and SVG with new interactive possibilities. Import from, and export to, an expansive list of file formats, including EPS, DWG, TIFF, PNG, and JPEG.

Advanced standards compliance

Ensure compliance with various standards-based systems with support for technical publication standards. Expand your reach with Translation Memory System (TMS) support. Publish S1000D (incl. Issue 5.0) or ATA iSpec 2200 compliant IETPs, and deliver technical communication projects that feature 3D PDF and PDF/A support.



What's new?

Experience a seamless transition from 3D design to illustration

Turn repurposed 3D engineering data into detailed technical illustrations with ease.

- **3-Point Thread Creation tool**

By referencing the center and edges of a threadless bolt, the new 3-Point Thread Creation tool accurately snaps to the sides of your bolt as you drag the thread along it.

- **Remove Border tool**

The new Remove Border tool takes effortless thread and well creation even further, by removing the redundant outer lines of the projected shape with one click.

- **XVL Studio enhancements**

Now links on parts in XVL Studio will be converted to HTML links when imported to Corel DESIGNER, and variable part names used in the Assembly Tree will map to Corel DESIGNER for added consistency.

Work faster with a reimagined approach to technical illustration

Experience streamlined technical illustration with your frequently used tools concentrated where they matter most—at your fingertips.

- **Projection Bookmarks**

Pin custom perspective settings on your illustration for later and recall them by clicking the bookmark indicator on your drawing.

- **Projection Shortcut**

Project shapes in and out of parallel perspective instantaneously with a handy shortcut.

- **Reconfigured Projected Axes docker**

Move elements along a projected axis more intuitively without the need to switch between dockers or other UI controls.

Work better together with collaborative asset management, review and approval

Stay connected with colleagues and clients in powerful new ways as remote work becomes the new normal.

- **Collaboration feature enhancements**

Intuitively store, organize, and share cloud files using the new project dashboard. Gather live comments and annotations from contributors directly in your .DES or .CDR design file.

- **Dynamic Asset Management**

Share libraries of symbols across teams and when changes are made by you or others, you can sync the updates to ensure you're always working with the most current asset.

Create complete spare parts pages with impressive new functionality

Create detailed spare parts pages with complete control, thanks to a series of noteworthy new features purpose-built to power discrete manufacturing workflows.

- **Interactive SVG support**

Convey parts information with even more clarity by linking drawing callouts to table rows, so that on hover, the corresponding information is highlighted.

- **Sources docker enhancements**

Now you can import .DES, .CDR, and spreadsheet files into Corel DESIGNER's Sources docker to couple technical illustrations with specifications in tables.

- **Interactive SVG export**

Publish fully interactive documentation online, thanks to an enhanced Export docker with support for interactive SVG export.

Transform technical designs into compelling marketing assets

This fully loaded suite of dedicated applications extends the reach of visual communications.

- **Draw in Perspective**

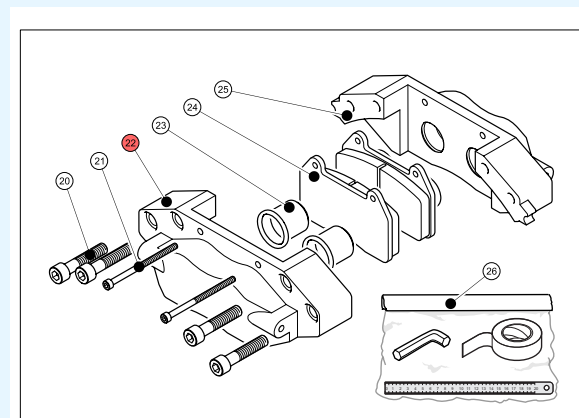
Add creative touches in 1, 2 or 3-point perspective, in Corel DESIGNER and CorelDRAW.

- **Multipage View**

View, manage, edit, and publish all of your project's digital assets in one flexible design space.

- **Enhanced Photo-Editing**

Get quick access to your most frequently used filters and apply critical image adjustments non-destructively, thanks to the new Adjustments docker.



#	Name	Qty	ITEM
20	BT2021-X6	4	053721
21	BT2021-X4	2	093748
22	CAL-OUT	1	076954
23	STM-B	1	006864
24	BP-OUT	1	008304
25	CAL-IN	1	078633
26	KT-SEP	1	311067

What's included

Applications

- **Corel DESIGNER™ 2021**
Precise technical illustration
- **CorelDRAW® 2021**
Vector illustration and page layout
- **Corel PHOTO-PAINT™ 2021**
Professional image editing
- **XVL Studio Corel Edition**
3D visualization and authoring
- **Corel Font Manager**
Font exploration and management tool
- **PowerTRACE™**
AI-powered bitmap-to-vector tracing
(included as part of Corel DESIGNER
and CorelDRAW applications)
- **CorelDRAW.app™**
Online vector illustration and
graphic design via web browser
- **CorelDRAW.app™ for iPad**
Vector illustration and
graphic design iPad app
- **CAPTURE™**
Screen capture tool
- **AfterShot™ 3 HDR**
RAW photo editor

Content

- 4,000 industry-standard symbols:
Architectural, Electrical, General,
Mechanical, and Tools
- 7,000 clipart, digital images,
and vehicle wrap templates
- 1,000 high-resolution digital photos
- Over 1,000 TrueType and/or OpenType fonts,
plus integrated access to over 1,000
Google Fonts families
- Over 150 professionally designed templates,
incl. 40+ technical ANSI, DIN, and ISO
standard templates
- Over 600 fountain, vector and bitmap fills

Flexible purchasing options and pricing:

Flexible, affordable purchasing options for all team sizes and budgets make CorelDRAW Technical Suite perfect for any business or individual. Choose between subscription or one-time purchase with included maintenance.

System Requirements

- Windows 10*, 64-bit, with latest Updates
- Intel Core i3/5/7/9 or
AMD Ryzen 3/5/7/9/Threadripper, EPYC
- OpenCL 1.2-enabled video card with 3+ GB VRAM
- 4 GB RAM (8+ GB recommended)
- 9 GB available hard disk space for application and
installation files
- Mouse, tablet or multi-touch screen
- 1280 x 720 screen resolution at 100% (96 dpi)
- Internet connection required to install and
authenticate CorelDRAW Technical Suite and
access some of the included software components,
online features and content

*CorelDRAW Technical Suite 2021 supports Windows 10, version 2004, 20H2, 21H1 and later versions which may be released during the lifecycle of CorelDRAW Technical Suite 2021.

For more information or to try it free,
contact your local reseller or visit
www.coreldraw.com/technicalsuite.



Corel, the Corel balloon logo, CorelDRAW, the CorelDRAW balloon logo, Corel DESIGNER, AfterShot, CAPTURE, CorelDRAW.app, Corel PHOTO-PAINT, and PowerTRACE are trademarks of Corel Corporation. iPad is a trademark of Apple Inc. All other company, product and service names, logos, brands and any registered or unregistered trademarks mentioned are used for identification purposes only and remain the exclusive property of their respective owners. Patents: www.corel.com/patents

Original sample artwork is provided by third parties and is used, and/or modified, by permission, unless otherwise agreed with such parties.

©2021 Corel Corporation. 07/21